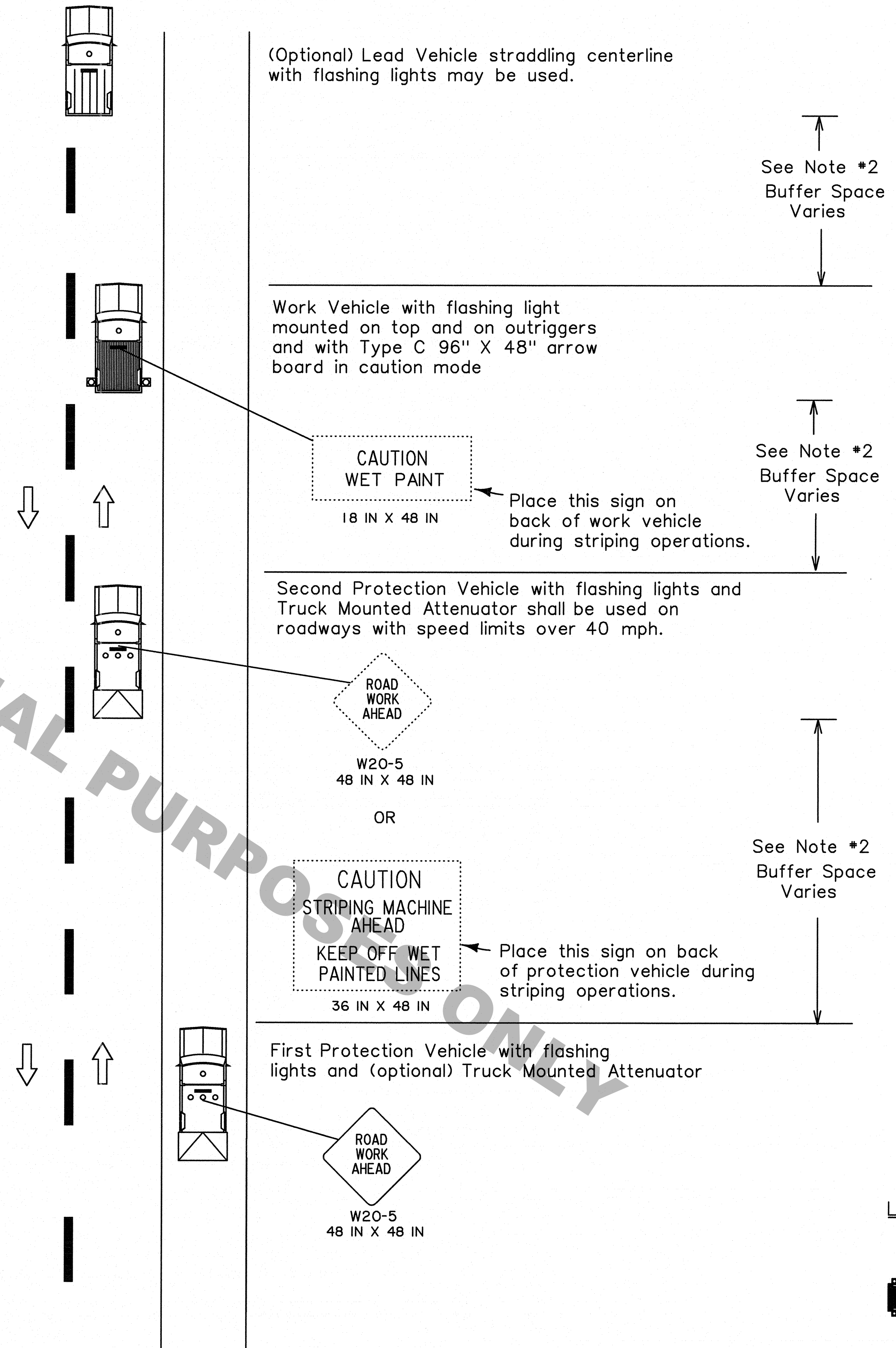


NOTES

This sheet shall be used with the Temporary Traffic Control General Notes Sheets TTC-00(A), TTC-00(B), and TTC-00(C).

1. This layout represents the minimum traffic controls required for moving operations on two-lane roads with two-way traffic, such as striping and placement of raised pavement markers.
2. Distances between vehicles may vary and should be adjusted due to drying time and sight obstructions such as overpasses and hills. Vehicles with attenuators shall move with work operations. Buffer space shall not exceed rollahead distance required by the manufacturer plus 100 feet.
3. If a queue greater than 5 minutes (about 1000 feet) exists, the contractor shall cease operations and pull over to the shoulder until the queue dissipates.
4. Flaggers may be used with this layout, if needed. See TTC-00(B).

FOR INFORMATIONAL PURPOSES ONLY



ALL TTC STANDARDS SHOW MINIMUM CONSTRUCTION SIGNING.
ALL SITUATIONS SHALL BE REVIEWED AND/OR DESIGNED BY THE ENGINEER.
CONTRACTORS ARE RESPONSIBLE FOR COMPLYING WITH ALL TTC STANDARDS.

LEGEND

	Direction of Travel
	Work Vehicle
	Lead Vehicle
	Protection Vehicle

SHEET NUMBER									
DESIGNED J. COLVIN	CHECKED P. ALLAIN	PARISH	FEDERAL PROJECT	STATE PROJECT	DATE 02/13/2015	SHEET	BY DATE: 3/12/15	REVISION DESCRIPTION	APPROVED BY CHIEF ENGINEER
TEMPORARY TRAFFIC CONTROL FOR MOVING OPERATIONS ON TWO-WAY TWO-LANE ROADWAYS									
TTC-18									
TRAFFIC ENGINEERING									